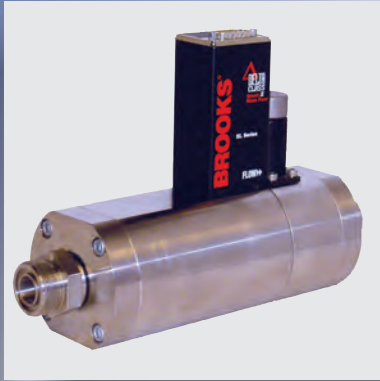


# Introducing the Brooks SLA Series Thermal Mass Flow and Pressure Products with New Advanced Features



**Coplanar  
Valve  
Improves  
Turndown**



**Enhanced  
Temperature  
Stability**



**Zero  
Drift  
Diagnostic**



# Smart Link Advantage

The Brooks SLA Series mass flow meters and controllers encompasses the Delta and Smart II electronics yielding Brooks' premiere **smart link** digital thermal mass flow platform. The devices **link** to advanced service tools and the S-Series RS-485 protocol. SLA also offers the **advantage** of digital protocols and new features.

## The SLA family includes:



**SLA5800 Series**  
standard elastomer sealed



**SLAMf Series IP65 /**  
NEMA 4X weather-proof



**SLA7000 Series 1.125"**  
compact metal sealed and UHP

Some of the new features available are:

### Coplanar Valve

The Coplanar Valve was designed to improve device-to-device consistency and extend the MFC turndown. The Coplanar Valve offers several advantages:

- 3 times the control range
- Increased flow range
- Reduced inventory
- More robust control in changing process conditions

### Enhanced Temperature Stability

With the enhanced temperature stability option, Brooks characterizes every device over a range of temperatures. The data is then input into the device and the software compensates for any drift due to temperature. The result is a dramatically improved temperature stability specification.

### Zero Drift Diagnostic

Brooks' products have long been revered for their resistance to zero drift over long periods of time. Now Brooks is the first MFC supplier to prove their stability with the introduction of the Zero Drift Diagnostic option. This option detects and alerts the user when the flow sensor zero drifts by more than user specified limits, giving the user a higher level of confidence that the process has not shifted.

### Brooks is your ideal mass flow partner.

At Brooks, we combine unmatched product innovation with extensive application experience to deliver the best solution for your application. All Brooks products are unsurpassed in reliability and quality. Our worldwide network of sales experts, unequalled post-sale technical support, and a strong financial foundation make Brooks the perfect long-term partner for our customers.

Contact your local representative for more information by visiting [BrooksInstrument.com/RepLocate](http://BrooksInstrument.com/RepLocate).

#### Brooks Instrument

- **North, South, and Central America**  
215.362.3700 or Toll-Free at 888.554.FLOW  
Email: [BrooksAM@EmersonProcess.com](mailto:BrooksAM@EmersonProcess.com)
- **Europe, Middle East, and Africa**  
+31.318.549.300  
Email: [BrooksEU@EmersonProcess.com](mailto:BrooksEU@EmersonProcess.com)
- **Asia Pacific**  
011.81.3.5633.7100  
Email: [BrooksAS@EmersonProcess.com](mailto:BrooksAS@EmersonProcess.com)

[BrooksInstrument.com](http://BrooksInstrument.com)

**BROOKS**<sup>®</sup>  
INSTRUMENT